

ASPE Richmond Chapter NEWS



December 2011

NEXT SCHEDULED MEETING

<u>Date</u>	December 12, 2011
<u>Time</u>	11:30 AM- 1:00 PM
<u>Place</u>	The Holiday Inn Express – 9933 Mayland Dr. Richmond, Va. 23233
<u>Speaker</u>	Air Compressors and Compressed Air Solutions
<u>Price</u>	\$15
<u>Contact</u>	Tina Capece tina.capece@ha-inc.com 804-521-7035

President's Report

Tina Capece, CPD – Chapter President

Last month's meeting was on Seismic and MEP. We had a great turnout for this topic, 40 members and non-member to be exact. I know that there were also several mechanical engineers that came from different companies. One thing is for sure, I know that everyone took away something from the great presentation.

This month's meeting will be on Air Compressors and compressed air solutions, which will be presented by Ingersoll Rand Industrial Technologies.

Tabletops for Last month's meeting were: Jay Otto of Otto Sales and Bill Lesemann of Lesemann and Son and Mason Industries. Thank you guys for your support I can't express how much it mean to us as a chapter and to me.

We are still talking about opening a satellite chapter down at the Beach, we are waiting on the signed petition to be returned so we can move forward with presenting this to National. Please if you are member down at the beach and want to be part of this new Satellite chapter please come forward and express your interest.

Continue on Page 2

ASPE - Richmond Chapter Newsletter - October 2011

BOARD OF DIRECTORS

PRESIDENT

Tina Capece, CPD
H&A Architects and Engineers
804-521-7035
tina.capece@ha-inc.com

VICE PRESIDENT - TECHNICAL

Eric Scott, CPD
H&A Architects and Engineers
804-420-1608
E.Scott@ha-inc.com

Vice President - Legislative

Stanley Hunt
Design Plumbing Service, LLC
804-241-0614
designplumbingservice@yahoo.com

Vice President - Membership

Elis R. Lowry Jr., CPD (Randy)
Baskervill
804-343-1010
rlowry@baskervill.com

Vice President - Education

Josh Landis
H&A Architects and Engineers
804-521-1051
j.landis@ha-inc.com

Treasurer

Jeff Bew LEED AP BC+C
H&A Architects and Engineers
804-822-3018
j.bew@ha-inc.com

Administrative Secretary

Jay Otto
Otto Sales
804-798-2600
jayotto@ottosales.com

Corresponding Secretary

Position currently not held

Historian

Position currently not held

AFFILIATE LIAISON/ RESOURCE

ENHANCEMENT CHAIR

William G. Lesemann Jr.
Lesemann & Son
804-752-6301
blesemann@wglesemann.com

Treasurer's Report

Jeff Bew, LEED AP BC+C
Chapter Treasurer

Merry Christmas and Happy New Years

Thank you for your support!

Jeff Bew, LEED AP BD+C

Continued President's Report

Mentoring and teaching new designers

I would like to take a minute, to talk about mentoring and how Plumbing designer/engineers are really falling short due to technology these days. Teaching is not 2D anymore it's hands on 3D where you really need to know how to design plumbing and install it almost as good as the contractor can, because when you're using Revit, you're installing the plumbing system in the building just as if you're the contractor out in the field. When looking over new drafters you have to take that approach in reviewing their design, you can no longer look at it on a 2D paper you need to go into the drawing and review it in 3D. I have always taught with risers which is how I was taught, so I have always been in the 3D mind set, however some only mark-up in the 2D mind set, which if you're using Revit will not make sense to new drafter and up and coming designer. So just think about the way you teach and your approach and you will be able to have your designer understanding sooner. See page 6 for an example.....

(OPEN REVIT AND LEARN IT WITH YOUR DRAFTERS/DESIGNERS IT'S THE KEY TO TEACHING) **Please email me comments to keep this discussion going.**

Merry Christmas

I look forward to seeing you this month

Tina Capece, CPD

President

ASPE Richmond Chapter



©2011 Sloan Valve, Inc. All rights reserved.

Any Application. Any Environment.™

Basys™ offers a truly innovative platform of modular electronic sensor faucets for a broad range of commercial applications. Backed by a century of experience and grounded in proven Sloan technologies, the platform delivers revolutionary efficiencies in service and maintenance. With five body types, multiple power harvesting options, and advanced programmability and user controls, Basys provides the ultimate experience for users and plumbers alike.



Build a Basys online:
sloanvalve.com/basys



W.G. LESEMAN & ASSOCIATES
804-752-6301

SLOAN.

Project Highlight

The goal of this area of the monthly newsletter is to highlight a project with a special/unique or difficult design or installation/construction feature. Examples could be a Leadership in Energy and Environmental Design (LEED) project, a project installation in an occupied building, emergency domestic water systems or a difficult installation due to existing conditions or difficult coordination with structure.

This section will include a picture of the project and a written description from an individual involved with the project. This provides the opportunity for the membership to highlight one of their projects and also provides notoriety for the company. This opportunity is open to all members of the Baltimore Chapter of ASPE.

To highlight your project contact

Technical Report

Eric C. Scott, CPD

Vice President Technical

We would like to thank everyone who came out to the November meeting. There was a tremendous turnout and a special Thanksgiving menu; a very successful meeting. A very special thanks to Jonathan Reinhardt of Mason Industries for flying here and speaking about "Understanding Seismic for MEP Systems".

Thanks to our meeting sponsor Bill Lesemann, Jay Otto with Otto Sales and Jonathan Reinhardt with Mason Industries for providing the table top displays.

The topic and speaker for December 12, 2011 will be "Compressed Air Solutions" as presented by Christian Eagle of Ingersoll Rand Industrial Technologies. Chris Eagle has two years of education towards a Mechanical Engineering Bachelors before switching to Bachelors of Business Administration from Strayer University. Chris served 6 years as an Aviation Electricians Mate and Flight Mechanic on HH-60 helo in the United States Coast Guard active duty. Chris has worked for 4 years as Atlas Copco Air Compressor Service Technician with Tencarva Machinery, 4 years as Service Coordinator for Ingersoll Rand Richmond Air Center, and 7 years as Application Engineer (Inside Sales) for Ingersoll Rand Richmond Customer Center.

There will be an evaluation form passed out for all to complete and I would like to invite everyone to provide feedback on the topics presented monthly. If there is a topic you would like to learn more about please let me know. Please contact me at e.scott@ha-inc.com.

Richmond ASPE 2011-2012 Meeting & Education Schedule

Date	Topic	Presenter(s)	Location
September 12, 2011	Real World Energy Solutions" focusing on pumps and hot water source products that are energy efficient	David Dahl (Harry Eklof & Associates, Inc.)	Holiday Inn Express; 9933 Mayland Drive
October 10, 2011	NFPA 99 Medical Gas Design	Ralph Johnson (W.G. Lesemann & Son)	Holiday Inn Express; 9933 Mayland Drive
November 14, 2011	Understanding Seismic for MEP	Jonathan Reinhardt (Mason Industries)	Holiday Inn Express; 9933 Mayland Drive
December 12, 2011	Air Compressors and Compressed Air Solutions	Chris Eagle (Ingersoll Rand Industrial Technologies)	Holiday Inn Express; 9933 Mayland Drive
January 9, 2012	"Building Modeling (BIM from a contracting teams' perspective)"	Jamal Merza (Colonial Webb)	Holiday Inn Express; 9933 Mayland Drive
February 6, 2012	Commissioning & LEED Panel Discussion - Joint JRGBC & ASHRAE Meeting	TBD	The Westwood Club - 11:30am to 1:00pm \$20 (Lunch Included)
March 19, 2012	Joint Meeting with SFPE	TBD	Holiday Inn Express; 9933 Mayland Drive
April 9, 2012	OPEN	OPEN	Holiday Inn Express; 9933 Mayland Drive
May 14, 2012	OPEN	OPEN	Holiday Inn Express; 9933 Mayland Drive
June 11, 2012	OPEN	OPEN	Holiday Inn Express; 9933 Mayland Drive

ADVERTISING

Newsletter Advertising:

- Rates based on ad size and will include the following:
 - As a paid advertiser you will have your business card in the newsletter that will have a link to your Web page if you have a Web page
 - As a paid advertiser you will have a hyperlink provided that will link to your Web page
 - Ads for the year will begin in the September issue and run through the May issue
 - Advertisers wishing to join after September's issue will be billed on a prorated basis
- All payments will be collected prior to the October issue –failure to make payments will result in the ad being pulled from further issues.
 - Full page ASPE Member \$300
 Non Member \$400
 - ½ page ASPE Member \$200
 Non Member \$300
 - ¼ page ASPE Member \$100
 Non Member \$200
 - Bus. Card ASPE Member \$75
 Non Member \$150

Newsletter Advertising

Please refer to the adjacent summary for available advertising space and associated fees in the monthly ASPE Richmond Chapter newsletter. Ten (10) newsletters will be published and issued to the Chapter membership and associated industry firms in the Richmond area each ASPE calendar year (September through June). Rates will be prorated for advertising beginning mid-year.

If interested in advertising in the newsletter, please contact the newsletter editor,

Tina Capece , by telephone at

804-521-7035 or via email

Monthly Sponsorship Opportunities

The Richmond Chapter of ASPE continues to have successful meetings and is looking to continue improving throughout the year. The strong foundation that began in September is the springboard for an even better year than last year.

Last year the Chapter initiated the following sponsorship opportunities that were well received:

Door Prizes - Miscellaneous door prizes given away at the monthly meetings for no cost to the attendees. This includes announcement in the newsletter, multiple email notices of the meeting and announce-ment at the monthly meeting sponsored.

Tabletop Presentations - Opportunity to provide a tabletop presentation of equipment or material relative to the plumbing profession for a monthly meeting. The tabletop will be set up from beginning to end of the monthly meeting. Cost is a door prize to be raffled to the attendees. This includes announce-ment in the newsletter, multiple email notices of the meeting and announcement at the monthly meeting sponsored.

If you are interested in any of the sponsorship opportunities listed above OR any other opportunities to sponsor please contact Tina Capece, CPD

tcapece@ha-inc.com

WG LESEMANN & ASSOCIATES, INC.

11182 HOPSON ROAD SUITE A

ASHLAND, VIRGINIA, 23005

PH: 804-752-6301 FAX: 804-798-2859

AERO Manufacturing

www.aeromfg.com

Aqua Bath (In Stock in Ashland)

www.aquabath.com

BeaconMedaes (In Stock in Ashland)

www.beaconmedaes.com

Bradley Corporation (In Stock in Ashland)

www.bradleycorp.com

Eemax Inc. (In Stock in Ashland)

www.eemaxinc.com

Filtrine

www.filtrine.com

ISIMET

www.isimet.com

MAPA Products (In Stock in Ashland)

www.mapaproducts.com

NSF & Non-NSF Scullery sinks, Kitchen Equipment, Custom sinks, Work Tables, Hand sinks, and Accessories

ADA Compliant Acrylic Tubs and Showers, Bariatric Units, Psychiatric Units, Whirlpools, and Solid Surface Surrounds.

Medical Gas Equipment: Outlets, Zone Valve Boxes, Area & Master Alarms, Nitrogen Control Cabinets, Hoses a& Hose Reels, High Pressure & Liquid Manifolds, Medical & Lab Air Compressors, & Medical, Lab & WAGD Vacuum Pumps.

Washfountains, MG & Express Lavatory Systems, Solid Surface Countertops, Individual & Group Showers, Security Fixtures, Emergency Fixtures, Navigator Thermostatic Mixing Valves, & Patient Care Units.

Instantaneous Electric Water heaters: Single Point, Flow Controlled, Marin/RV, Thermostatic, Whole House, Emergency Fixture, Digital Readout, & Thermostone Units

Quality Drinking water solutions for Filling Stations, Designer fountains, Purifiers, Filters, Sterilizers, Wall, Remote and Free-standing Chillers and Plenum Flow Schematic designs.

Laboratory Utility Controllers, (Gas, Electric, Water), Remote & Local Panic Systems, , Monitoring Beacons & Alarms, Emergency Shower Monitoring, & Solenoids.

Roof Top Pipe Supports: Standard, Value Line, Heavy Duty, & Seismic/Wind Restraint. Duct Supports, Bridging Systems, Roof Hydrants, Roof Top Electrical Disconnects, Heavy Duty Walk Pads, & Expansion Tank supports.

MIFAB (In Stock in Richmond)

www.mifab.com

Milwaukee Valve

Hammond Valve

www.milwaukeevalve.com

www.hammondvalve.com

Sloan Valve Company (In Stock in Ashland)

www.sloanvalve.com

Stern-Williams Co. (In Stock in Ashland)

www.sternwilliams.com

Tyco Thermal Controls/ Raychem (In Stock in Ashland)

www.tycothermal.com

Specification Drainage: Cast Iron, PVC, Nickel Bronze & Stainless Steel. Floor, Area and Trench Drains, Cleanouts, & Carriers. Interceptors: Grease (Standard, Semi-Automatic, and Fully Automatic), Oil, Lint, & Fuel Interceptors. Access Doors. Trap Primers including Electronic. Water Hammer Arrestors, Wall and Yard Hydrants.

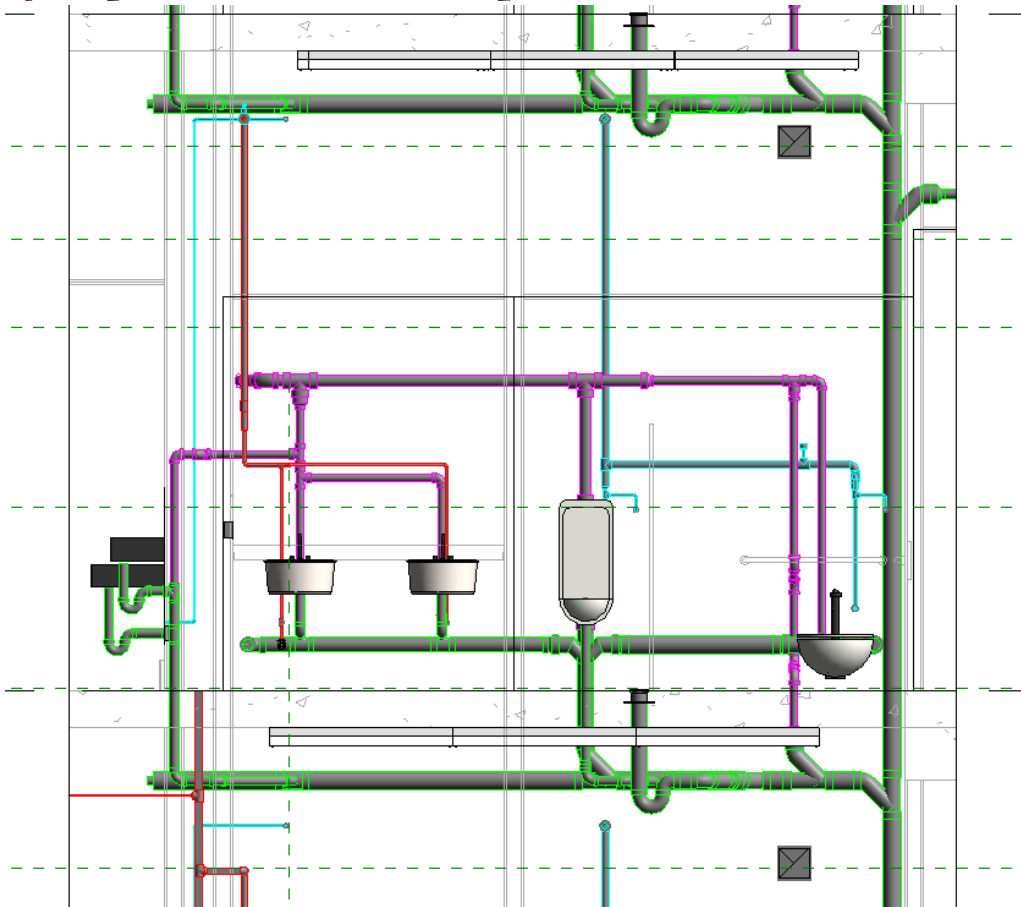
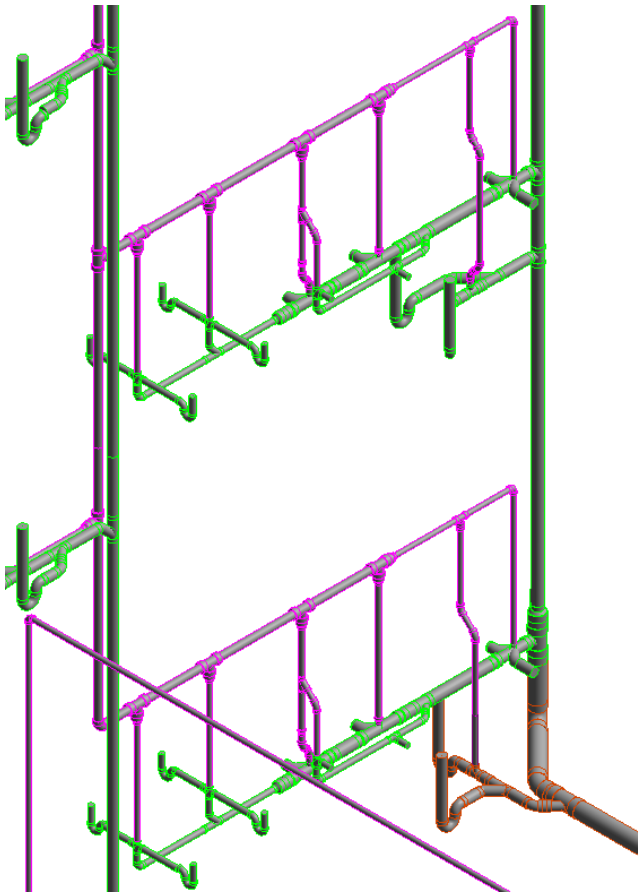
Full line of Ball, Butterfly, Gate, Globe and Check valves in cast iron, steel, bronze, and brass. High Performance butterfly valves. Full line of plumbing valves.

Flushvalves: Manual, Battery and Hardwire Sensor, Piston & Diaphragm Type, Bed Pan Washers, Naval & Dolphin Valves.

Faucets: Battery, Hardwire, and Light Powered, Manual Quick-Top, , Water Free Urinals, Surgical Scrub Sinks, Act-O-Matic Shower Heads, & PWT Prison Control System.

Service Sinks, Shower Floors, Mop Hangers, Faucets & Accessories, Shower Cabinets, Outdoor Drinking fountains & Showers.

Heat Trace, HWAT Temperature Maintenance, Snow Melt, De-Icing, & Floor heating systems.



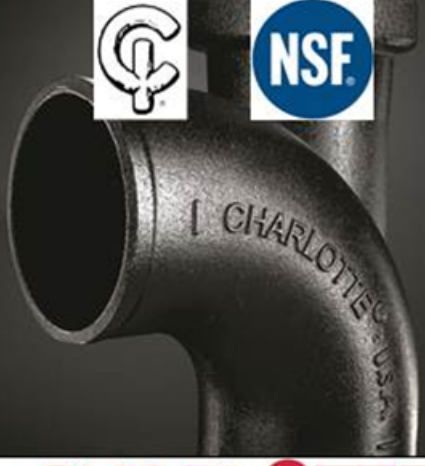
Virginia Marketing Associates

Please feel free to email us (Virginiamarketing@verizon.net) for full line catalogues on any of the manufacturers you find of interest. Visit us at www.VirginiaMarketingAssociates.com. You can access links under the Products Tab to all of our offerings. We have wholesale distribution throughout Virginia and Maryland.

Some of the lines We Proudly Represent:

Cast Iron Soil Pipe with these important Marks:



CHARLOTTE
PIPE AND FOUNDRY COMPANY
www.charlottepipe.com

TOWERING OVER THE COMPETITION WITH QUIET RELIABILITY ... WISPERFLO™

THE MOST ENERGY EFFICIENT PUMPING SOLUTIONS
FOR YOUR BUILDINGS OF TOMORROW



WTC TOWER 1
INSTALLED FEB 2010



QuantumFlo™
an exponential leap in technology

QuantumFlo, Inc. • 210 Springview Commerce Drive
Bldg. 150 • DeBary, FL 32713 • www.quantumflo.com

Certified IAPMO
NSF 61, Annex G



**Double Up
Your Energy Savings.**



Wilo Stratos & Stratos D

What's better than saving up to 80% energy? Saving up to 80% energy twice, of course. Using a single volute design with two ECM technology-driven power heads, the Stratos D is two high-efficiency circulators with the installation time of one! A full line of optional interface modules allows you integrate the Stratos and Stratos D seamlessly into your building management system for ultimate control. Efficient? We call it Pumpen Intelligenz.

WILO USA LLC • 866-945-6872 • www.wilo-usa.com



1-800-556-7556 • www.harryeklof.com



Pumpen Intelligenz.